

Metabolic Phenotyping in Disease Diagnosis & Personalised Health Care

3rd-6th December, 2012

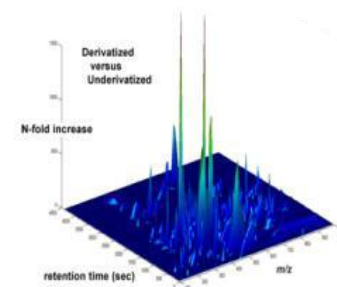
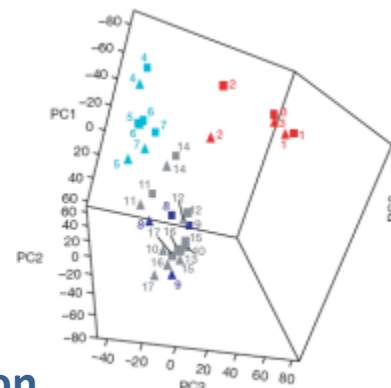
Imperial College London

Room G47B, Flower Building, South Kensington, London SW7 2AZ, UK

- ❖ Hands-on Workshops
- ❖ NMR Spectroscopic Tools
- ❖ Mass Spectrometry Approaches
- ❖ Metabolite Identification
- ❖ QC strategies and Study Design
- ❖ Data Analysis and Interpretation
- ❖ Panel Discussions
- ❖ Tips and Tricks

Registration Fee

- Industry: £975
- Academics: £475
- Students: £295



Bookings: http://www5.imperial.ac.uk/medicine/coursebookings/metaphenotype_1212.html

For more details please contact: Dr Jia Li, jia.li105@imperial.ac.uk, +44 (0)207 594 3230

DAY 1 MON 3RD December

0930 *Registration and Coffee*
1000 *Introductory Lecture (Jeremy Nicholson)*
1115 *Coffee*
1130 *NMR Background (Geoff Hawkes)*
1230 *Lunch*
1315 *Lab Tour (Anthony Dona, Matt Lewis)*
1400 *Tools for NMR based Metabonomics (Manfred Spraul)*
1445 *Metabolite ID using NMR (Richard Barton)*
1530 *Coffee*
1545 *Clinical Applications of Metabonomics (Elaine Holmes)*
1645 *Exploring & Exploiting the Metabolic Phenotype of Cancer using Metabonomics (Hector Keun)*
1730 *Close*

DAY 2 TUES 4TH December

0900 *Coffee*
0930 *LC-MS for Metabonomics (Matt Lewis)*
1030 *Coffee*
1045 *Metabolite Identification in MS (John Shockcor)*
1145 *Introduction to Chemometrics (Tim Ebbels)*
1245 *Lunch*
1330 *Design of Experiments (Claire Beckett)*
1415 *Introduction to OPLS-DA (Claire Beckett)*
1500 *Coffee*
1515 *DATA ANALYSIS WORKSHOP*
1730 *Close*

***Welcome Reception, 6:30 pm, 1st Floor concourse,
Sir Alexander Fleming Building, Imperial College***

DAY 3 WED 5TH December

0900 *Coffee*
0930 *Sense and Nonsense in Global Metabolic Profiling by LC-MS (Ian Wilson)*
1030 *Coffee*
1045 *Bioinformatics and Systems Biology with Metabolic Data (Marc Dumas)*
1130 *Metabolomics data and pathways (Rachel Cavill)*
1215 *TransOmics Informatics (Robert Tonge)*
1245 *Lunch*
1330 *Tips and Tricks for Generating NMR Metabolic Profiles (Richard Barton)*
1415 *Tips and Tricks for Generating MS Metabolic Profiles (Elizabeth Want)*
1500 *Coffee*
1515 *DATA ANALYSIS WORKSHOP*
1730 *Close*

Course Dinner, 7pm, 58 Prince's Gate

DAY 4 THURS 6TH December

0900 *Coffee*
0930 *Mass Spectrometric Profiling of Intact Biological Tissues (Zoltan Takats)*
1030 *GC/CE-MS and Metabonomics (Coral Barbas)*
1130 *Coffee*
1145 *Chromatography for Metabolite Profiling (Robert Plumb)*
1230 *Tips, Tricks, and Traps in analysing metabolic profiles (Tim Ebbels)*
1315 *Lunch and Discussion (Q&A)*
1430 *Close*